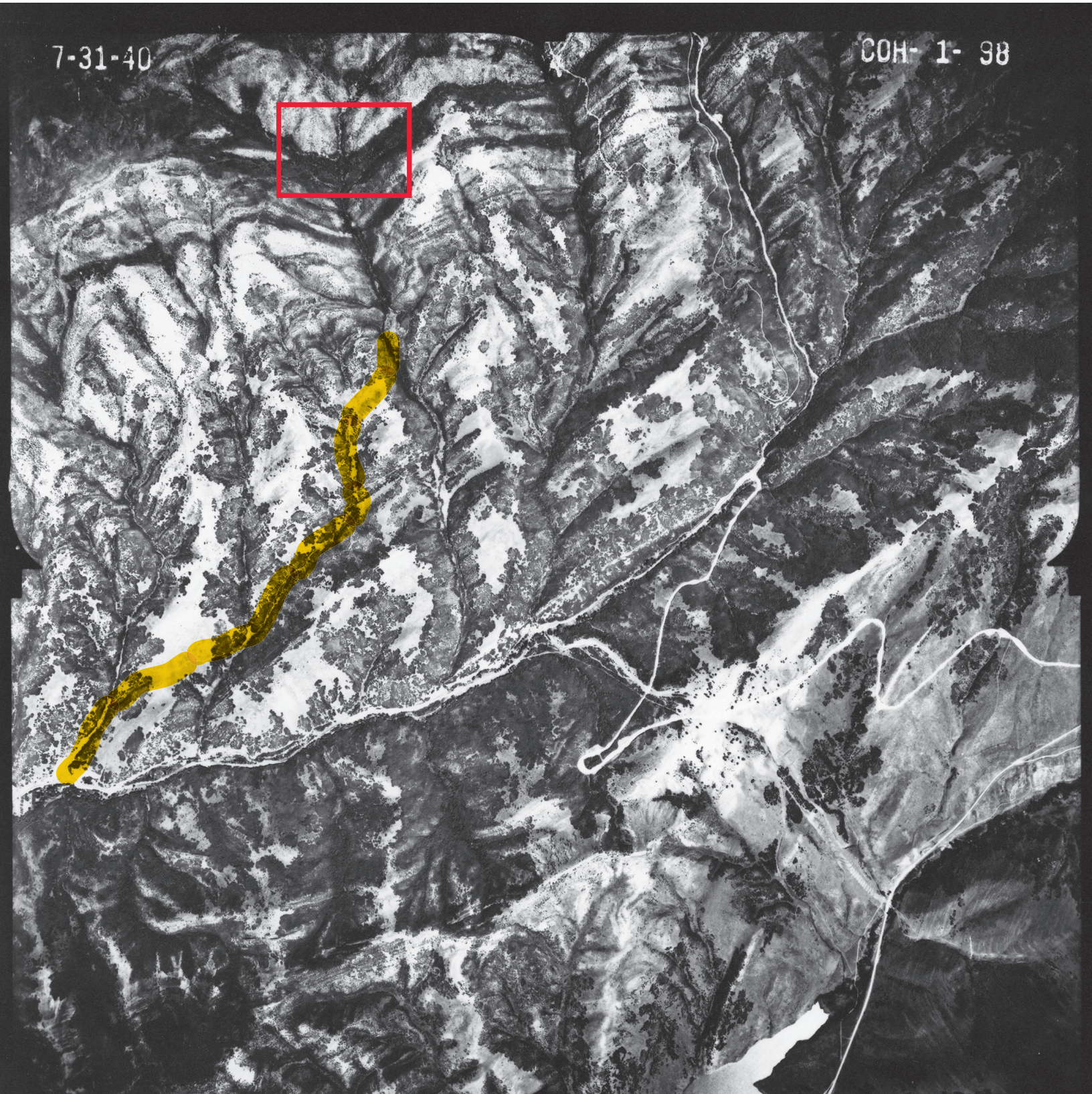
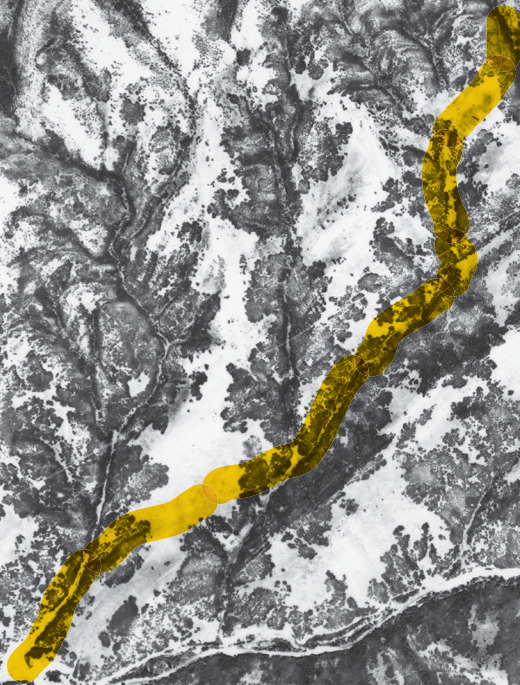
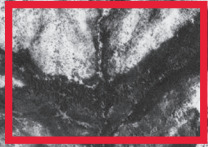


## Metadata download for resource 22803

<b>Availability</b>	Public
<b>UGS Program</b>	Hazards
<b>Title</b>	1940 COH (East Salt Lake Conservation District, Utah) Project Aerial Index, Sheet 1
<b>Author</b>	Soil Conservation Service (SCS)
<b>Publisher</b>	Soil Conservation Service
<b>Date</b>	1940-08-26 00:00
<b>Publication Identification</b>	COH, AIS-22385, USDA 8920
<b>County</b>	Salt Lake, Summit
<b>Abstract / Description</b>	Aerial photography project covers parts of Utah; frame scale 1:20, 000. Indexes are part of the UGS Aerial Imagery Collection; frames available
<b>Keywords</b>	index
<b>Scan Date</b>	2008-07-28 12:18:34
<b>Original Filename</b>	1940_COH-Index_1.pdf
<b>Geotechnical Database</b>	Not Included
<b>Document Type</b>	Aerial Imagery Index

7-31-40

COH- 1- 98

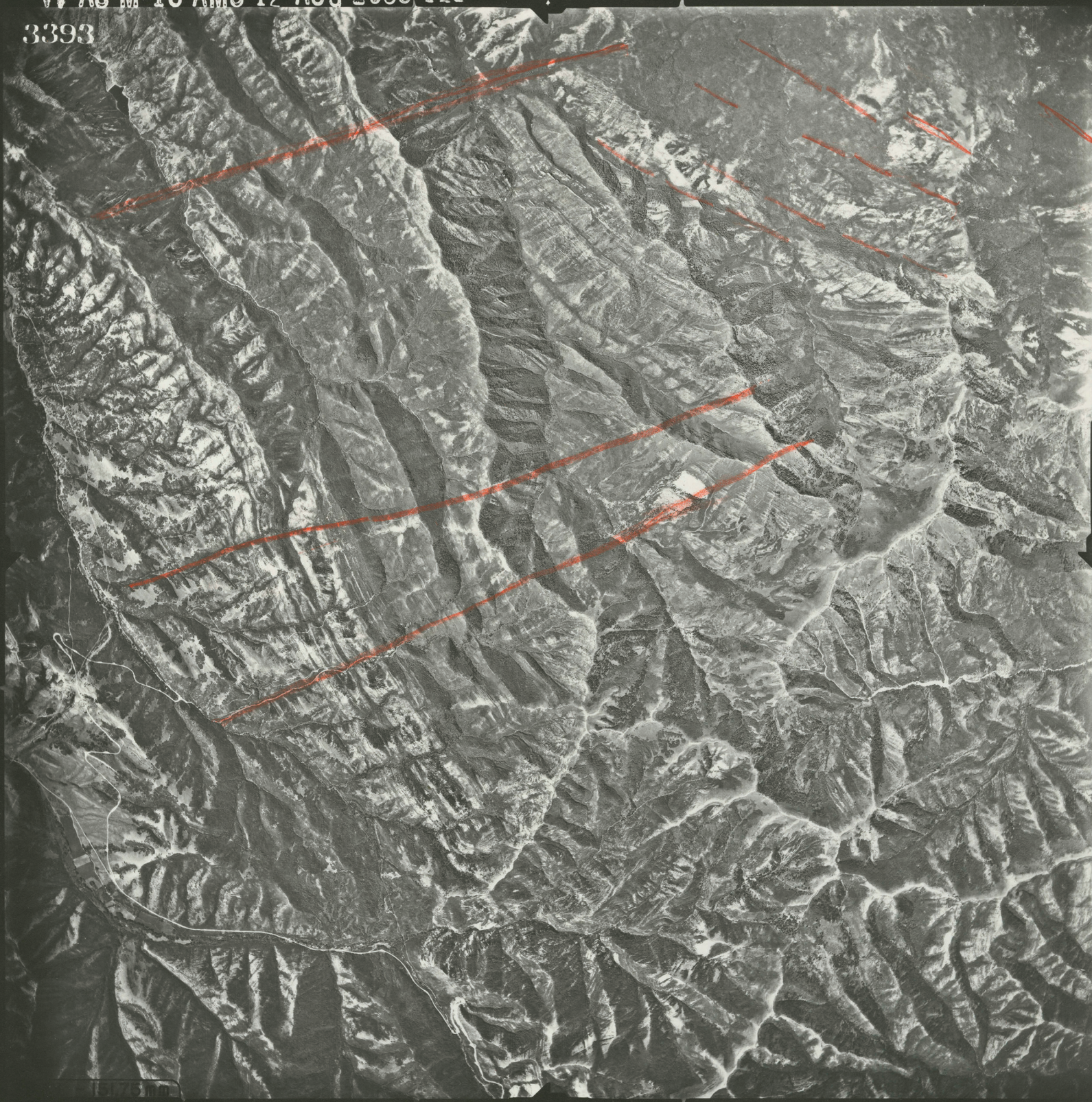


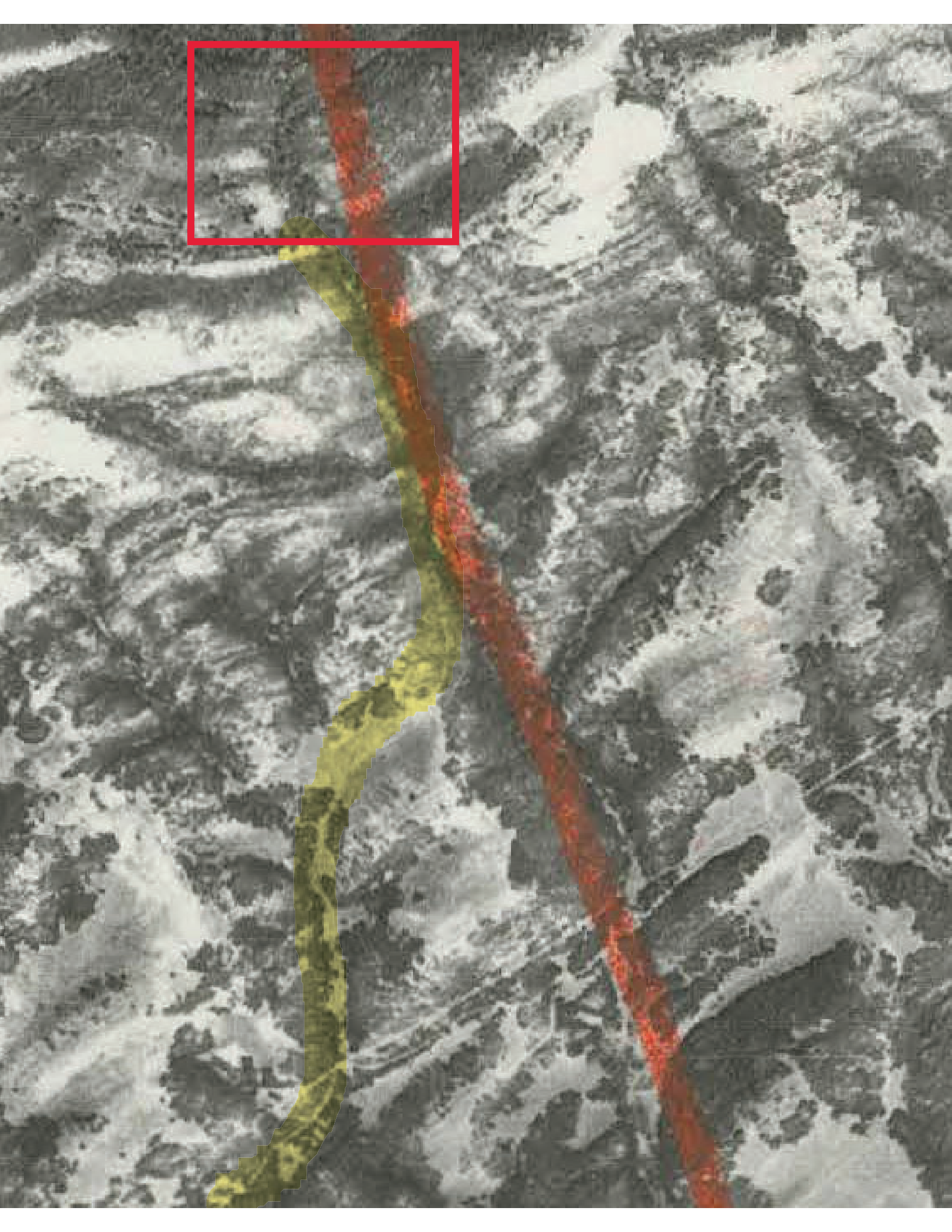
## Metadata download for resource 23004

<b>Availability</b>	Public
<b>UGS Program</b>	Hazards
<b>Title</b>	1953 AMS-121 (Western United States High Altitude) Aerial Index, Project 121, Area AL, Sheet NK-12-7
<b>Author</b>	Army Map Service (AMS), Corps of Engineers
<b>Publisher</b>	Army Map Service, Corps of Engineers
<b>Date</b>	1953-00-00 00:00
<b>Publication Identification</b>	Project 121, Area AL, Sheet NK-12-7
<b>Accession Number</b>	Aerial-I262, I263, I264
<b>Abstract / Description</b>	Aerial photography project covers parts of Utah and other western states; frame scale 1:62, 400, index scale 1:312, 000. Indexes are part of the UGS Aerial Imagery Collection; frames available.
<b>Keywords</b>	index
<b>Scan Date</b>	2009-06-15 13:55:18
<b>Original Filename</b>	1953_AMS-121-Index_NK-12-7.pdf
<b>Geotechnical Database</b>	Not Included
<b>Document Type</b>	Aerial Imagery Index

VV AS M 18 AMS 12 AUG 1953 121

3393

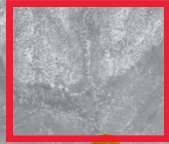




<b>FrameID</b> 70607	<b>Project</b> 1963 ELK	<b>Roll</b> 3	<b>FlightLine</b>	<b>Frame</b> 83	<b>Projection</b> NAD83
<b>CNorthing</b> 40.79048	<b>CEasting</b> -111.73633	<b>CoordinateSource</b> Map Estimated	<b>FrameDate</b> 25-06-1963	<b>FrameTime</b>	<b>Scale</b> 15840
<b>MediaType</b> Photographic Paper	<b>FrameType</b> B&W (Greyscale)	<b>FrameFormat</b> 9x9 inch	<b>FrameMarkings</b> No	<b>FrameGeology</b> No	
<b>Resolution</b> 800	<b>ScanBits</b> 8	<b>ScanChannels</b> 1	<b>ScanFilename</b> ELK_3-83.tif		

6-25-63

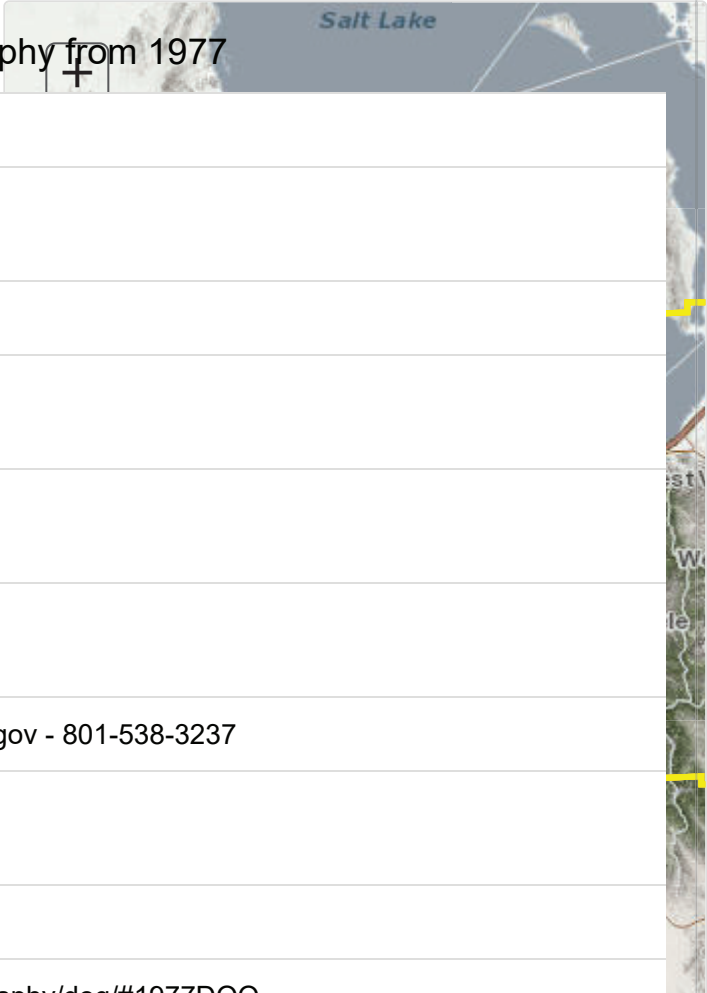
ELK-3-83



# DOQ 1977 (1m) Data Download 2.2.4 (ChangeLog.html)

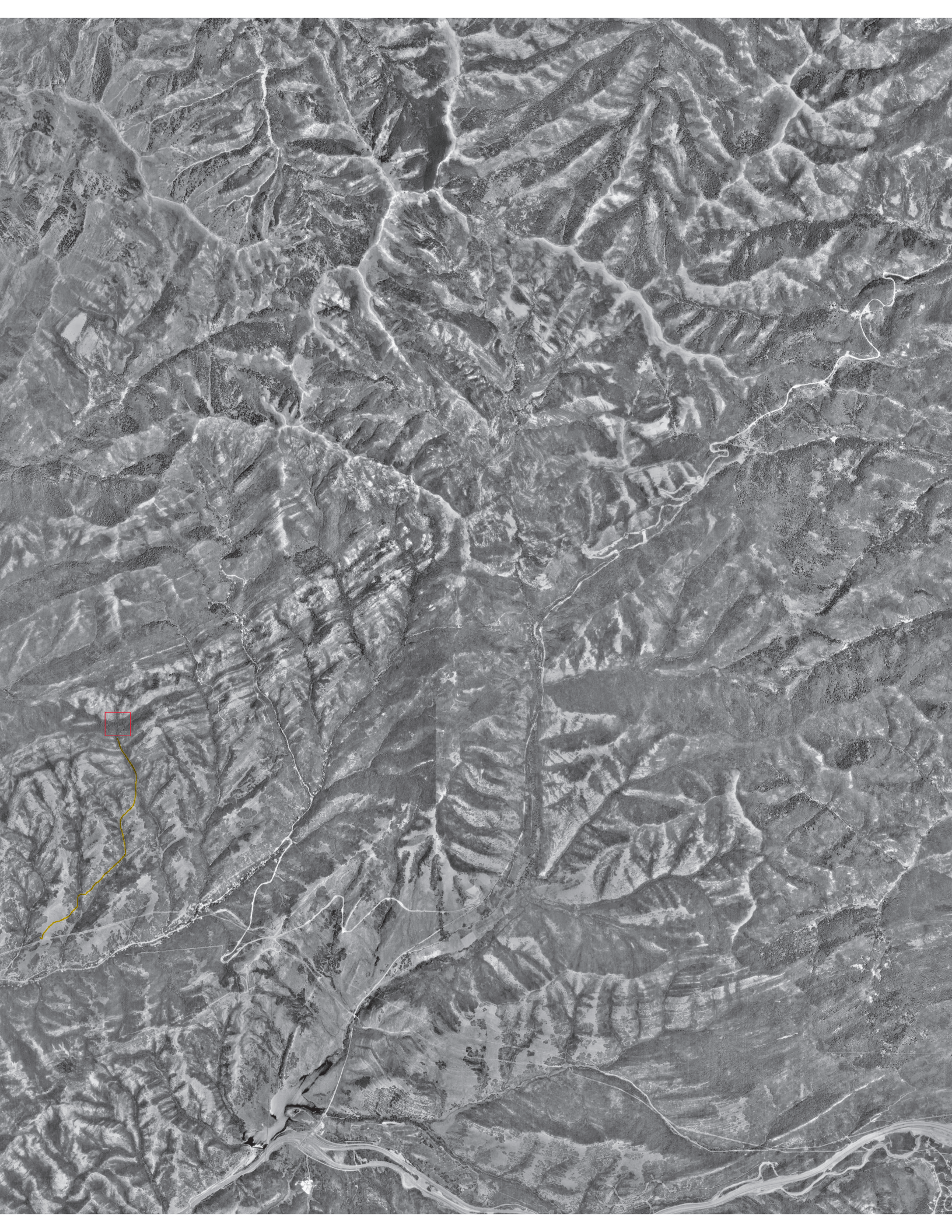
## Step 1. Select Products

1 Meter Black & White Digital Orthophotography from 1977



Resolution	1 Meter
Year Collected	1977
File Format	TIFF
Average File Size	145 MB
Horizontal Accuracy	USGS Digital Orthophoto Specs.
Flight Date Location	quad .txt file (Calendar_Date)
Contact	AGRC - Rick Kelson - RKelson@utah.gov - 801-538-3237
Stored at AGRC?	Yes
FTP_Path	n/a (n/a)
Web Page	<a href="https://gis.utah.gov/data/aerial-photography/doq/#1977DOQ">https://gis.utah.gov/data/aerial-photography/doq/#1977DOQ</a> ( <a href="https://gis.utah.gov/data/aerial-photography/doq/#1977DOQ">https://gis.utah.gov/data/aerial-photography/doq/#1977DOQ</a> )





FrameID	Project	Frame	OtherID	Projection	CNorthing	CEasting	CoordinateSource	FrameDate	Scale
70899	1983 USFS	406	EC	NAD83	40.78004	-111.72742	Map Estimated	29-05-1983	6000
70900	1983 USFS	407	EC	NAD83	40.77793	-111.73454	Map Estimated	29-05-1983	6000
70901	1983 USFS	408	EC	NAD83	40.77495	-111.74259	Map Estimated	29-05-1983	6000
70902	1983 USFS	409	EC	NAD83	40.77259	-111.75007	Map Estimated	29-05-1983	6000

FrameID	MediaType	FrameType	FrameFormat	FrameMarkings	FrameGeology	Resolution	ScanBits	ScanChannels	ScanFilename
70899	Photographic Paper	Color	9x9 inch	No	No	800	8	3	USFS_EC-406.tif
70900	Photographic Paper	Color	9x9 inch	No	No	800	8	3	USFS_EC-407.tif
70901	Photographic Paper	Color	9x9 inch	No	No	800	8	3	USFS_EC-408.tif
70902	Photographic Paper	Color	9x9 inch	No	No	800	8	3	USFS_EC-409.tif



409

201201

201201

KODAK SAFETY FILM



202011

408

KODAK SAFETY FILM



20201

407

QF L210 02

KODAK SAFETY FILM

KODAK SAFETY FILM

406



20201

CFL 200 94

KODAK SAFETY FILM

# DOQ 1990s (1m) Data Download 2.2.4 (ChangeLog.html)

## Step 1. Select Products

1 Meter Black & White Digital Orthophotography from the 1990's

Resolution 1 Meter

Year Collected 1990's

File Format JPEG

Average File Size 25 MB

Horizontal Accuracy 7m

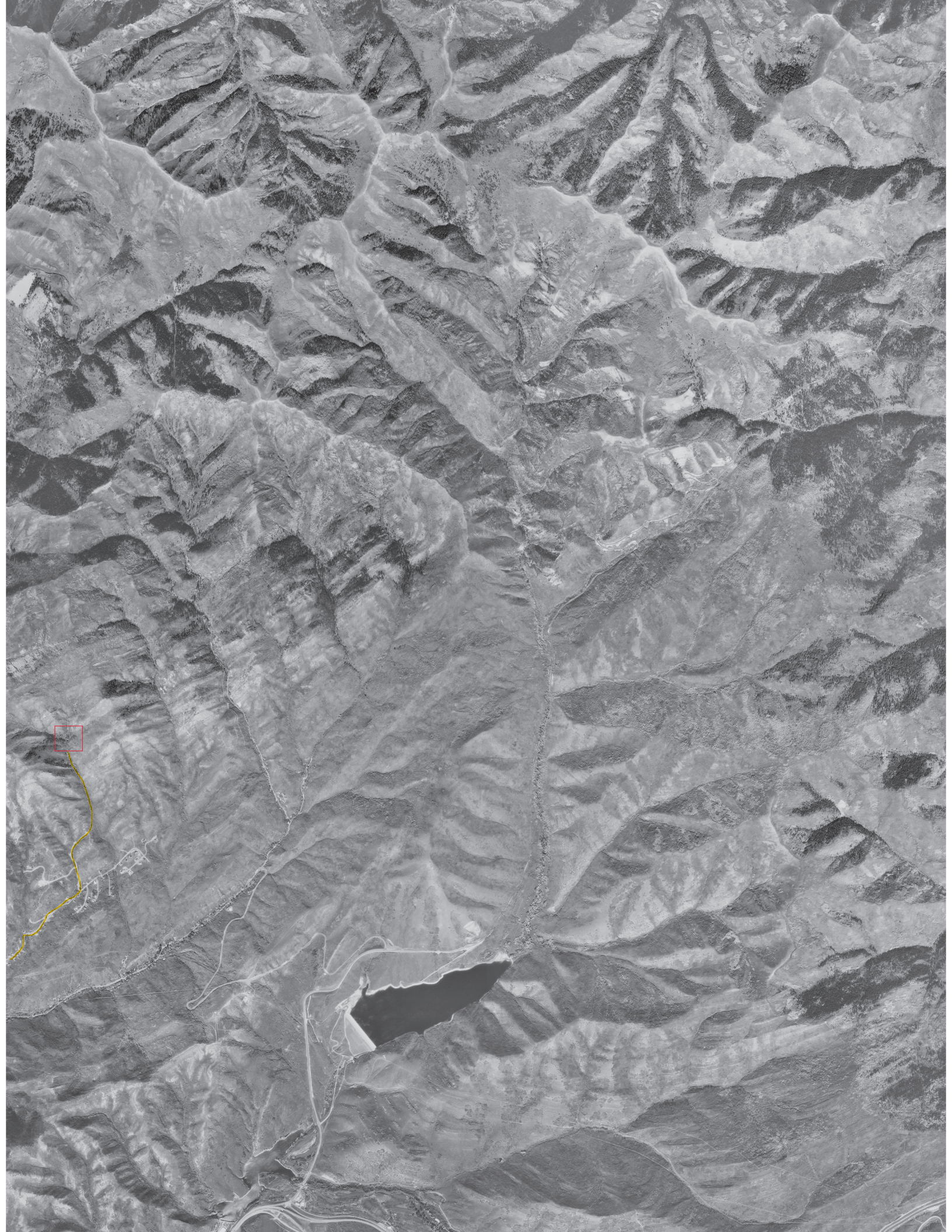
Flight Date Location quad .met file (SOURCE\_IMAGE\_DATE)

Contact AGRC - Rick Kelson - RKelson@utah.gov - 801-538-3237

Stored at AGRC? Yes

FTP\_Path n/a (n/a)

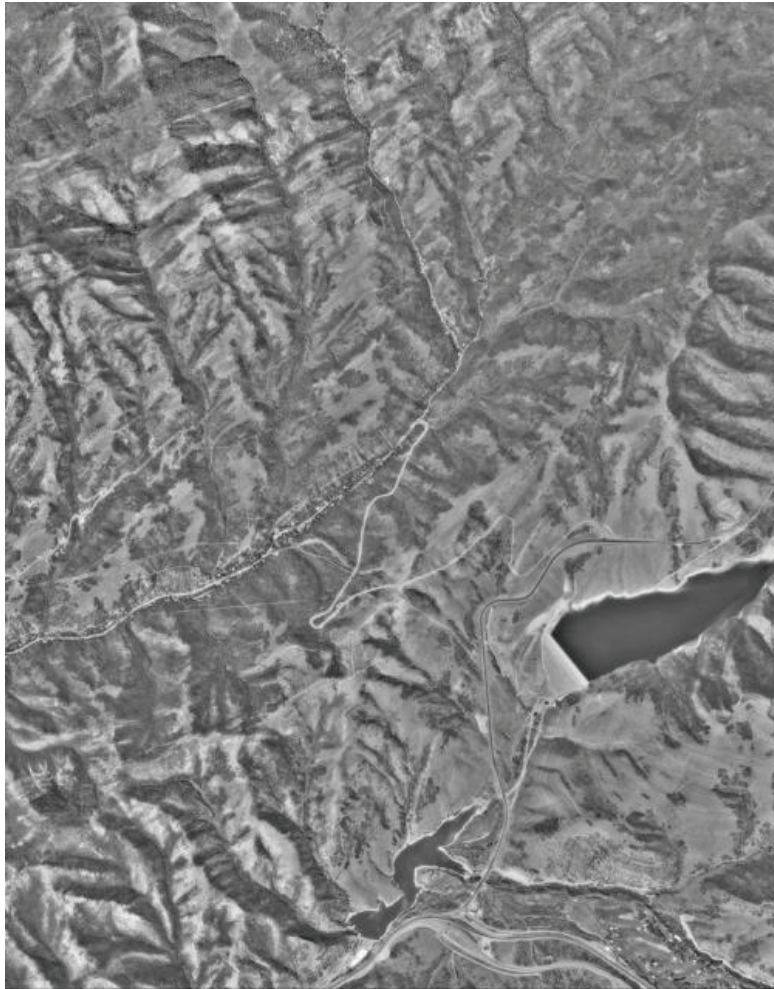
Web Page <https://gis.utah.gov/data/aerial-photography/doq/#1990DOQ>  
(<https://gis.utah.gov/data/aerial-photography/doq/#1990DOQ>)





- [Help](#)
- [Feedback](#)
- [Login](#)

## Full Display of DI0000000816601



Standard Browse

Data Set Attribute	Attribute Value
<a href="#">Entity ID</a>	DI0000000816601
<a href="#">Map Name</a>	MOUNTAIN DELL
<a href="#">Acquisition Date</a>	1993/09/08
<a href="#">State</a>	UT
<a href="#">Quadrant</a>	SW
<a href="#">Status</a>	1
<a href="#">Product Group</a>	3.75-MIN B/W
<a href="#">Production System</a>	3
<a href="#">Production Date</a>	1997/12/16
<a href="#">Primary Source Date</a>	1993/09/08
<a href="#">Coordinate System</a>	1
<a href="#">Coordinate Zone</a>	12
<a href="#">Photo Source(s)</a>	N 5921 217
<a href="#">Cell ID</a>	216890
<a href="#">ODB Prod ID</a>	816601
<a href="#">Resolution</a>	1
<a href="#">Version</a>	1
<a href="#">Band Type</a>	1

Data Set Attribute	Attribute Value
<a href="#">DOQ Format</a>	0
<a href="#">Standards Version</a>	7
<a href="#">Primary H Datum</a>	4
<a href="#">XY Unit</a>	2
<a href="#">Submitting Agency</a>	1
<a href="#">Oversight Agency</a>	1
<a href="#">Metadata Date</a>	1997/12/16
<a href="#">Create Date</a>	1998/03/31
<a href="#">Sales Data Base Date</a>	1998/05/05
<a href="#">Browse Available</a>	Y
<a href="#">Center Latitude</a>	40°46'52.50"N
<a href="#">Center Longitude</a>	111°43'07.50"W
<a href="#">NW Corner Lat</a>	40°48'45"N
<a href="#">NW Corner Long</a>	111°45'00"W
<a href="#">NE Corner Lat</a>	40°48'45"N
<a href="#">NE Corner Long</a>	111°41'15"W
<a href="#">SE Corner Lat</a>	40°48'45"N
<a href="#">SE Corner Long</a>	111°41'15"W
<a href="#">SW Corner Lat</a>	40°45'00"N
<a href="#">SW Corner Long</a>	111°45'00"W
<a href="#">Center Latitude dec</a>	40.78125
<a href="#">Center Longitude dec</a>	-111.71875
<a href="#">NW Corner Lat dec</a>	40.8125
<a href="#">NW Corner Long dec</a>	-111.75
<a href="#">NE Corner Lat dec</a>	40.8125
<a href="#">NE Corner Long dec</a>	-111.6875
<a href="#">SE Corner Lat dec</a>	40.75
<a href="#">SE Corner Long dec</a>	-111.6875
<a href="#">SW Corner Lat dec</a>	40.75
<a href="#">SW Corner Long dec</a>	-111.75

Download

View As XML

Save As XML

FGDC Format

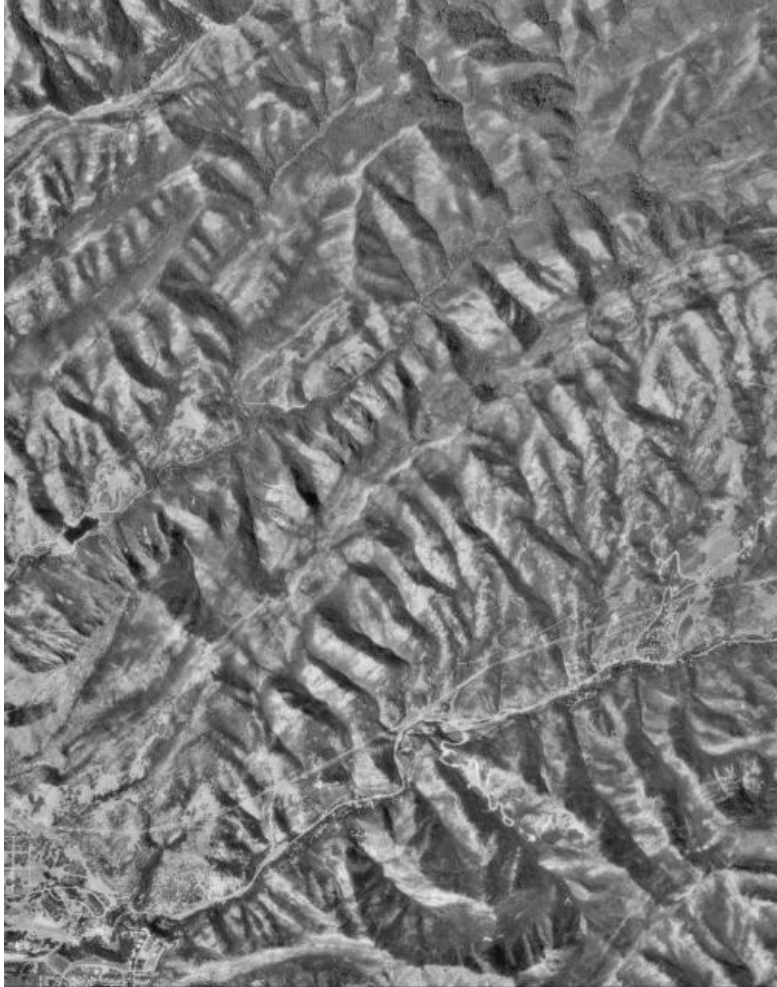
- [DOI Privacy Policy](#)
- [Legal](#)
- [Accessibility](#)
- [Site Map](#)
- [Contact USGS](#)

- 
- [U.S. Department of the Interior](#)
  - [DOI Inspector General](#)
  - [White House](#)
  - [E-gov](#)
  - [No Fear Act](#)
  - [FOIA](#)



- [Help](#)
- [Feedback](#)
- [Login](#)

## Full Display of DI0000000948806



Standard Browse

Data Set Attribute	Attribute Value
<a href="#">Entity ID</a>	DI0000000948806
<a href="#">Map Name</a>	FORT DOUGLAS
<a href="#">Acquisition Date</a>	1993/09/08
<a href="#">State</a>	UT
<a href="#">Quadrant</a>	SE
<a href="#">Status</a>	1
<a href="#">Product Group</a>	3.75-MIN B/W
<a href="#">Production System</a>	8
<a href="#">Production Date</a>	1998/05/14
<a href="#">Primary Source Date</a>	1993/09/08
<a href="#">Coordinate System</a>	1
<a href="#">Coordinate Zone</a>	12
<a href="#">Photo Source(s)</a>	NAPP 5921 288
<a href="#">Cell ID</a>	163396
<a href="#">ODB Prod ID</a>	948806
<a href="#">Resolution</a>	1
<a href="#">Version</a>	1
<a href="#">Band Type</a>	1

Data Set Attribute	Attribute Value
<a href="#">DOQ Format</a>	0
<a href="#">Standards Version</a>	7
<a href="#">Primary H Datum</a>	4
<a href="#">XY Unit</a>	2
<a href="#">Submitting Agency</a>	1
<a href="#">Oversight Agency</a>	1
<a href="#">Metadata Date</a>	1998/05/27
<a href="#">Create Date</a>	1999/02/03
<a href="#">Sales Data Base Date</a>	1999/02/17
<a href="#">Browse Available</a>	Y
<a href="#">Center Latitude</a>	40°46'52.50"N
<a href="#">Center Longitude</a>	111°46'52.50"W
<a href="#">NW Corner Lat</a>	40°48'45"N
<a href="#">NW Corner Long</a>	111°48'45"W
<a href="#">NE Corner Lat</a>	40°48'45"N
<a href="#">NE Corner Long</a>	111°45'00"W
<a href="#">SE Corner Lat</a>	40°48'45"N
<a href="#">SE Corner Long</a>	111°45'00"W
<a href="#">SW Corner Lat</a>	40°45'00"N
<a href="#">SW Corner Long</a>	111°48'45"W
<a href="#">Center Latitude dec</a>	40.78125
<a href="#">Center Longitude dec</a>	-111.78125
<a href="#">NW Corner Lat dec</a>	40.8125
<a href="#">NW Corner Long dec</a>	-111.8125
<a href="#">NE Corner Lat dec</a>	40.8125
<a href="#">NE Corner Long dec</a>	-111.75
<a href="#">SE Corner Lat dec</a>	40.75
<a href="#">SE Corner Long dec</a>	-111.75
<a href="#">SW Corner Lat dec</a>	40.75
<a href="#">SW Corner Long dec</a>	-111.8125

Download

View As XML

Save As XML

FGDC Format

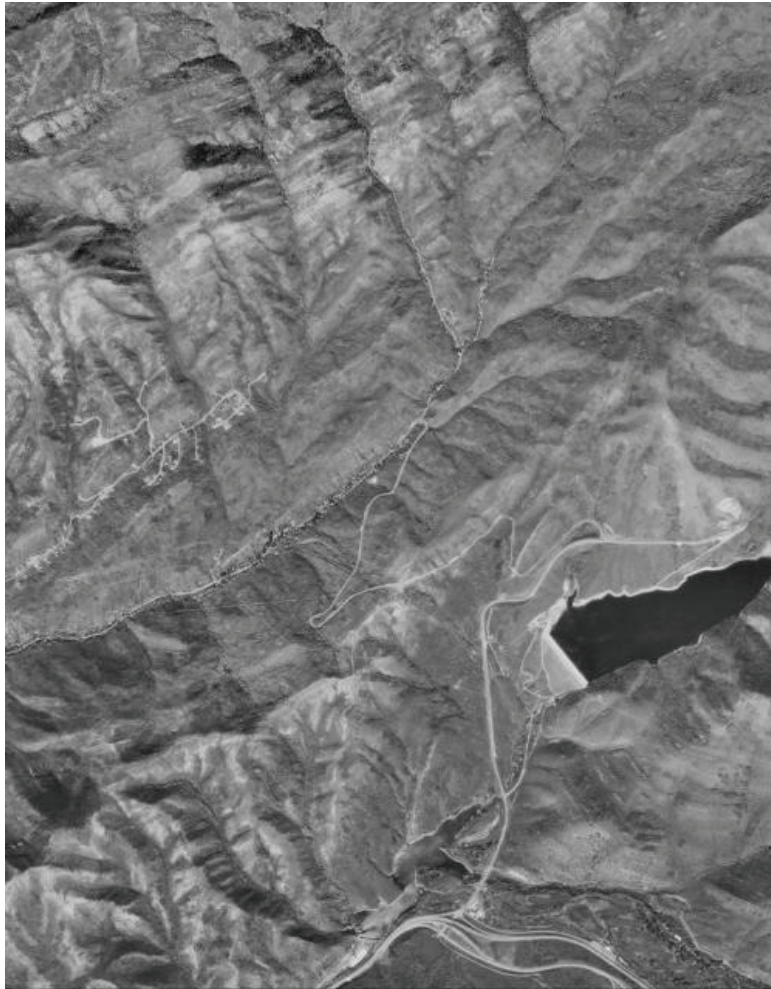
- [DOI Privacy Policy](#)
- [Legal](#)
- [Accessibility](#)
- [Site Map](#)
- [Contact USGS](#)

- 
- [U.S. Department of the Interior](#)
  - [DOI Inspector General](#)
  - [White House](#)
  - [E-gov](#)
  - [No Fear Act](#)
  - [FOIA](#)



- [Help](#)
- [Feedback](#)
- [Login](#)

## Full Display of DI00000001054303



Standard Browse

Data Set Attribute	Attribute Value
<a href="#">Entity ID</a>	DI00000001054303
<a href="#">Map Name</a>	MOUNTAIN DELL
<a href="#">Acquisition Date</a>	1997/10/04
<a href="#">State</a>	UT
<a href="#">Quadrant</a>	SW
<a href="#">Status</a>	0
<a href="#">Product Group</a>	3.75-MIN B/W
<a href="#">Production System</a>	3
<a href="#">Production Date</a>	2000/02/18
<a href="#">Primary Source Date</a>	1997/10/04
<a href="#">Coordinate System</a>	1
<a href="#">Coordinate Zone</a>	12
<a href="#">Photo Source(s)</a>	NAPP 10102 262
<a href="#">Cell ID</a>	216890
<a href="#">ODB Prod ID</a>	1054303
<a href="#">Resolution</a>	1
<a href="#">Version</a>	2
<a href="#">Band Type</a>	1

Data Set Attribute	Attribute Value
<a href="#">DOQ Format</a>	0
<a href="#">Standards Version</a>	7
<a href="#">Primary H Datum</a>	4
<a href="#">XY Unit</a>	2
<a href="#">Submitting Agency</a>	1
<a href="#">Oversight Agency</a>	1
<a href="#">Metadata Date</a>	2000/02/29
<a href="#">Create Date</a>	2000/03/15
<a href="#">Sales Data Base Date</a>	2000/03/24
<a href="#">Browse Available</a>	Y
<a href="#">Center Latitude</a>	40°46'52.50"N
<a href="#">Center Longitude</a>	111°43'07.50"W
<a href="#">NW Corner Lat</a>	40°48'45"N
<a href="#">NW Corner Long</a>	111°45'00"W
<a href="#">NE Corner Lat</a>	40°48'45"N
<a href="#">NE Corner Long</a>	111°41'15"W
<a href="#">SE Corner Lat</a>	40°48'45"N
<a href="#">SE Corner Long</a>	111°41'15"W
<a href="#">SW Corner Lat</a>	40°45'00"N
<a href="#">SW Corner Long</a>	111°45'00"W
<a href="#">Center Latitude dec</a>	40.78125
<a href="#">Center Longitude dec</a>	-111.71875
<a href="#">NW Corner Lat dec</a>	40.8125
<a href="#">NW Corner Long dec</a>	-111.75
<a href="#">NE Corner Lat dec</a>	40.8125
<a href="#">NE Corner Long dec</a>	-111.6875
<a href="#">SE Corner Lat dec</a>	40.75
<a href="#">SE Corner Long dec</a>	-111.6875
<a href="#">SW Corner Lat dec</a>	40.75
<a href="#">SW Corner Long dec</a>	-111.75

Download

View As XML

Save As XML

FGDC Format

- [DOI Privacy Policy](#)
- [Legal](#)
- [Accessibility](#)
- [Site Map](#)
- [Contact USGS](#)

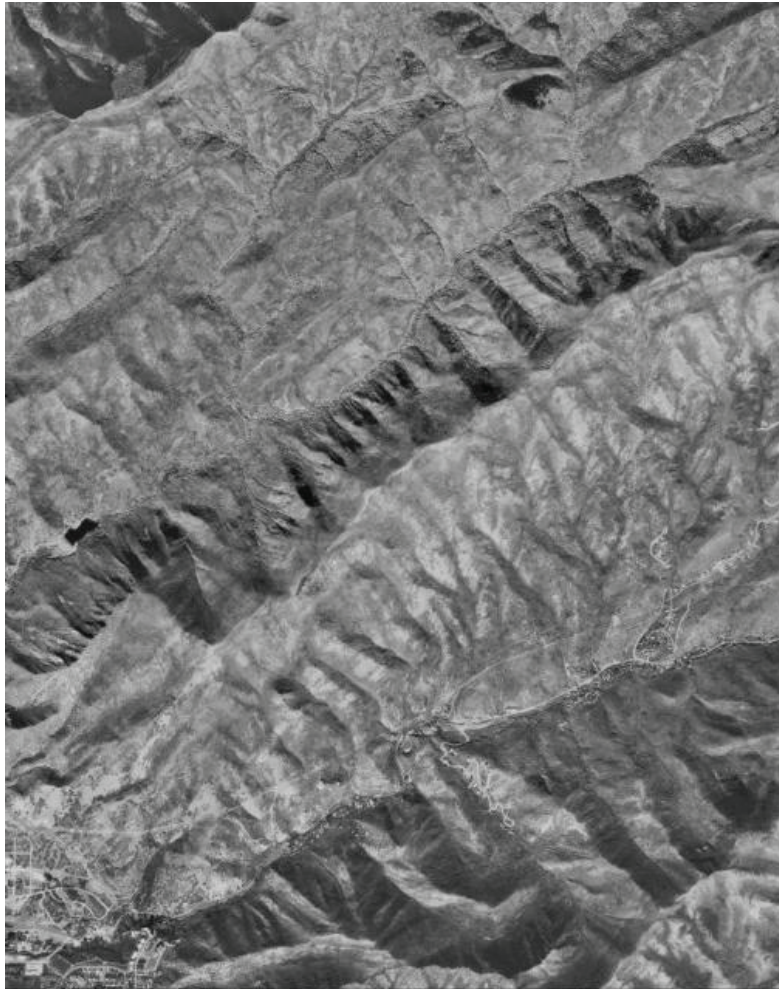
- 
- [U.S. Department of the Interior](#)
  - [DOI Inspector General](#)
  - [White House](#)
  - [E-gov](#)
  - [No Fear Act](#)
  - [FOIA](#)





- [Help](#)
- [Feedback](#)
- [Login](#)

## Full Display of DI0000001054298



Standard Browse

Data Set Attribute	Attribute Value
<a href="#">Entity ID</a>	DI0000001054298
<a href="#">Map Name</a>	FORT DOUGLAS
<a href="#">Acquisition Date</a>	1997/10/04
<a href="#">State</a>	UT
<a href="#">Quadrant</a>	SE
<a href="#">Status</a>	0
<a href="#">Product Group</a>	3.75-MIN B/W
<a href="#">Production System</a>	3
<a href="#">Production Date</a>	2000/02/21
<a href="#">Primary Source Date</a>	1997/09/12
<a href="#">Coordinate System</a>	1
<a href="#">Coordinate Zone</a>	12
<a href="#">Photo Source(s)</a>	NAPP 10096 234, NAPP 10103 6, NAPP 10103 8, NAPP 10103 93
<a href="#">Cell ID</a>	163396
<a href="#">ODB Prod ID</a>	1054298
<a href="#">Resolution</a>	1
<a href="#">Version</a>	2
<a href="#">Band Type</a>	1

Data Set Attribute	Attribute Value
<a href="#">DOQ Format</a>	0
<a href="#">Standards Version</a>	7
<a href="#">Primary H Datum</a>	4
<a href="#">XY Unit</a>	2
<a href="#">Submitting Agency</a>	1
<a href="#">Oversight Agency</a>	1
<a href="#">Metadata Date</a>	2000/02/29
<a href="#">Create Date</a>	2000/03/15
<a href="#">Sales Data Base Date</a>	2000/03/24
<a href="#">Browse Available</a>	Y
<a href="#">Center Latitude</a>	40°46'52.50"N
<a href="#">Center Longitude</a>	111°46'52.50"W
<a href="#">NW Corner Lat</a>	40°48'45"N
<a href="#">NW Corner Long</a>	111°48'45"W
<a href="#">NE Corner Lat</a>	40°48'45"N
<a href="#">NE Corner Long</a>	111°45'00"W
<a href="#">SE Corner Lat</a>	40°48'45"N
<a href="#">SE Corner Long</a>	111°45'00"W
<a href="#">SW Corner Lat</a>	40°45'00"N
<a href="#">SW Corner Long</a>	111°48'45"W
<a href="#">Center Latitude dec</a>	40.78125
<a href="#">Center Longitude dec</a>	-111.78125
<a href="#">NW Corner Lat dec</a>	40.8125
<a href="#">NW Corner Long dec</a>	-111.8125
<a href="#">NE Corner Lat dec</a>	40.8125
<a href="#">NE Corner Long dec</a>	-111.75
<a href="#">SE Corner Lat dec</a>	40.75
<a href="#">SE Corner Long dec</a>	-111.75
<a href="#">SW Corner Lat dec</a>	40.75
<a href="#">SW Corner Long dec</a>	-111.8125

Download

View As XML

Save As XML

FGDC Format

- [DOI Privacy Policy](#)
- [Legal](#)
- [Accessibility](#)
- [Site Map](#)
- [Contact USGS](#)

- 
- [U.S. Department of the Interior](#)
  - [DOI Inspector General](#)
  - [White House](#)
  - [E-gov](#)
  - [No Fear Act](#)
  - [FOIA](#)



FrameID	Project	Roll	FlightLine	Frame	OtherID	Projection	CNorthing	CEasting	CoordinatesSource
96778	2001	614190	1801		89	NAD83	40.79465	-111.75902	Map Estimated

Scale	MediaType	FrameType	FrameFormat	FrameMarkings	FrameGeology	Resolution	ScanBits	ScanChannels	ScanFilename
15840	Photographic Paper	Color	9x9 inch	No	No	800	8	3	614190_1801-89.tif

FrameDatFrameTime  
16-07-2001

07-16-01

USDA-F

16

614190

1801-89

FS160 1/ 650 f/5.6 FF1.0 EC+1/3 SP- v/h.05036 00% dt008.8 d=015 26.7V -59mb ER00 CAMS281

NM6 RC068 0248-0021 40-47-41N 111-45-34W 5655m 17:44:10 07-16-2001 59.8



NO. 7199 214.01

- [Help](#)
- [Feedback](#)
- [Login](#)

## Full Display of 1304607\_12TVL365150



Standard Browse

Data Set Attribute	Attribute Value
<a href="#">Entity ID</a>	1304607_12TVL365150
<a href="#">Beginning Date</a>	2003/09/14
<a href="#">Ending Date</a>	2003/09/23
<a href="#">EPSG</a>	26912
<a href="#">Map Projection Description</a>	NAD83 / UTM zone 12N
<a href="#">State/Province/Country</a>	UT
<a href="#">Datum</a>	NAD83
<a href="#">Dataset</a>	200309_salt_lake_city_ut_0x3000m_utm_clr
<a href="#">Projection Zone</a>	12
<a href="#">Sensor</a>	UNKNOWN
<a href="#">Sensor Type</a>	Color
<a href="#">Number of Bands</a>	3
<a href="#">Vendor</a>	TRIATHLON
<a href="#">Resolution</a>	0.3
<a href="#">Units of Resolution</a>	METER
<a href="#">Image Name</a>	12tv1365150
<a href="#">Agency</a>	USGS
<a href="#">Dataset Size</a>	104567
<a href="#">Center Latitude</a>	40°47'25.25"N
<a href="#">Center Longitude</a>	111°44'37.56"W
<a href="#">NW Corner Lat</a>	40°47'49.36"N
<a href="#">NW Corner Long</a>	111°45'09.84"W
<a href="#">NE Corner Lat</a>	40°47'49.77"N
<a href="#">NE Corner Long</a>	111°44'05.83"W
<a href="#">SE Corner Lat</a>	40°47'01.13"N

Data Set Attribute	Attribute Value
<a href="#">SE Corner Long</a>	111°44'05.29"W
<a href="#">SW Corner Lat</a>	40°47'00.72"N
<a href="#">SW Corner Long</a>	111°45'09.29"W
<a href="#">Center Latitude dec</a>	40.7903457774632
<a href="#">Center Longitude dec</a>	-111.743767999367
<a href="#">NW Corner Lat dec</a>	40.7970443091016
<a href="#">NW Corner Long dec</a>	-111.752732319528
<a href="#">NE Corner Lat dec</a>	40.7971589290213
<a href="#">NE Corner Long dec</a>	-111.734952651702
<a href="#">SE Corner Lat dec</a>	40.7836471915474
<a href="#">SE Corner Long dec</a>	-111.734803679205
<a href="#">SW Corner Lat dec</a>	40.7835326259051
<a href="#">SW Corner Long dec</a>	-111.75257974397

Download

View As XML

Save As XML

FGDC Format

- [DOI Privacy Policy](#)
- [Legal](#)
- [Accessibility](#)
- [Site Map](#)
- [Contact USGS](#)

- 
- [U.S. Department of the Interior](#)
  - [DOI Inspector General](#)
  - [White House](#)
  - [E-gov](#)
  - [No Fear Act](#)
  - [FOIA](#)



